

# CRACKS IN THE WORLD



*THIS COMIC BOOK WAS  
ENTIRELY CREATED  
BY MICHELE MISTRORIGO.*

# CRACKS IN THE WORLD

**“Cracks in the World”** was developed as part of the **ESSPIN** (Economic, Social, and Spatial Inequalities) project, in collaboration with the University of Thessaly, Politecnico di Milano, Department of Geography and Environment – University of Groningen, Université de Toulon, Faculty of Science – Charles University, Università degli Studi di Cagliari, Karelian Institute, EUROREG, Academia de Studii Economice din București, ESRI, the Institute for World Economy, and ALDA – European Association for Local Democracy.

Enjoy the read!

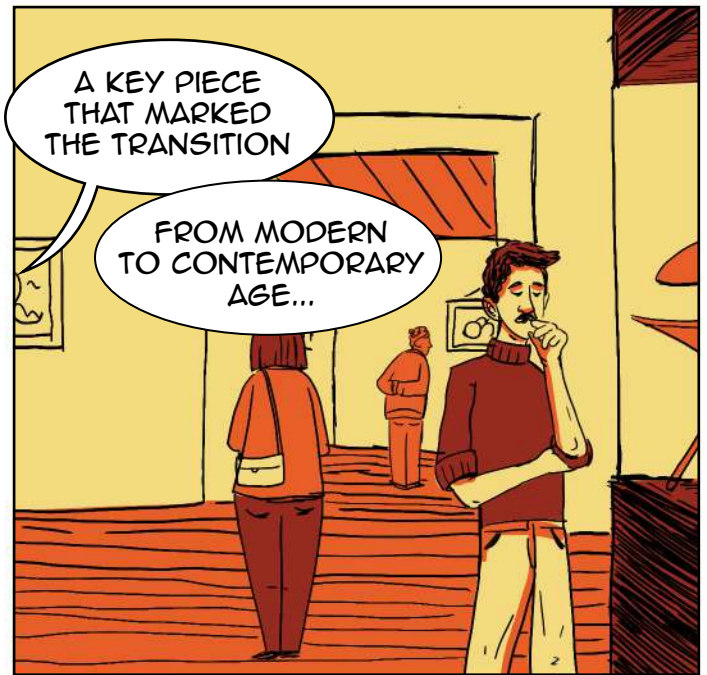
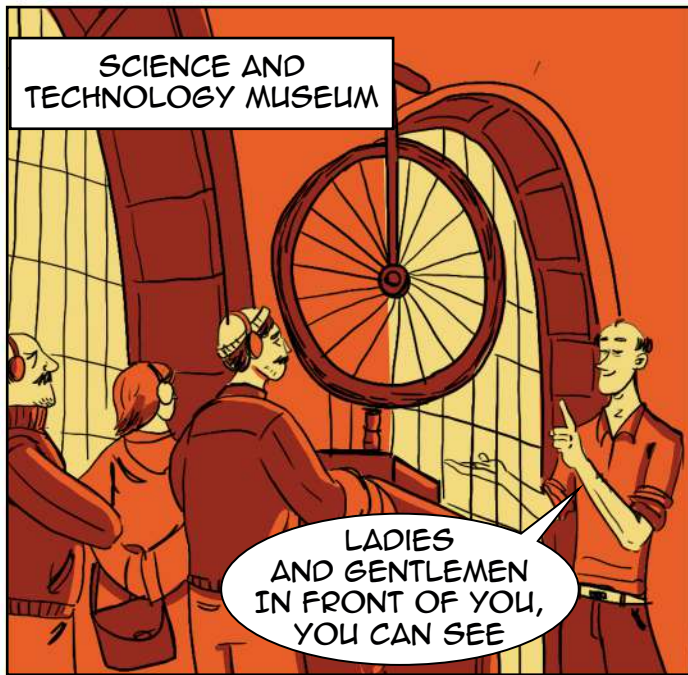
**Disclaimer:**

“Funded by the European Union. Views and opinions expressed are however those of the author(s) only and do not necessarily reflect those of the European Union or REA. Neither the European Union nor the granting authority can be held responsible for them.”

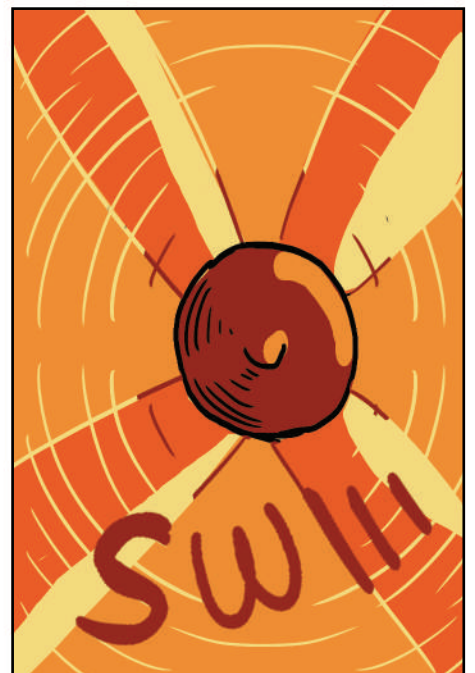


**Funded by  
the European Union**

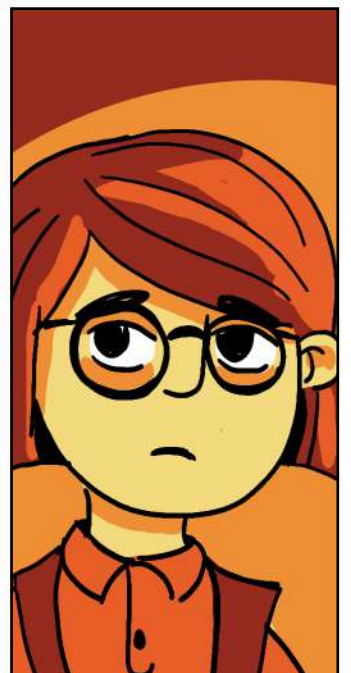
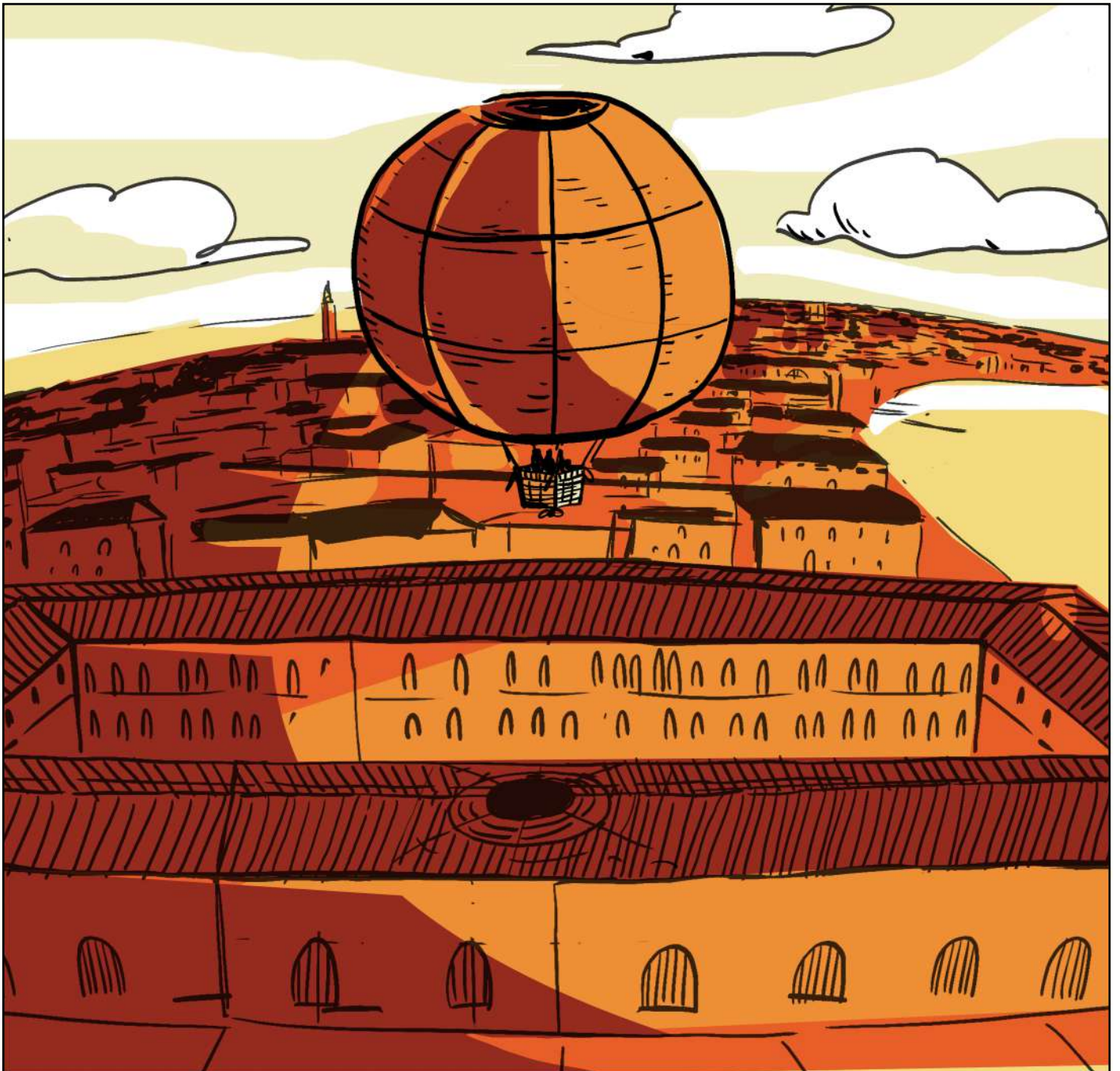






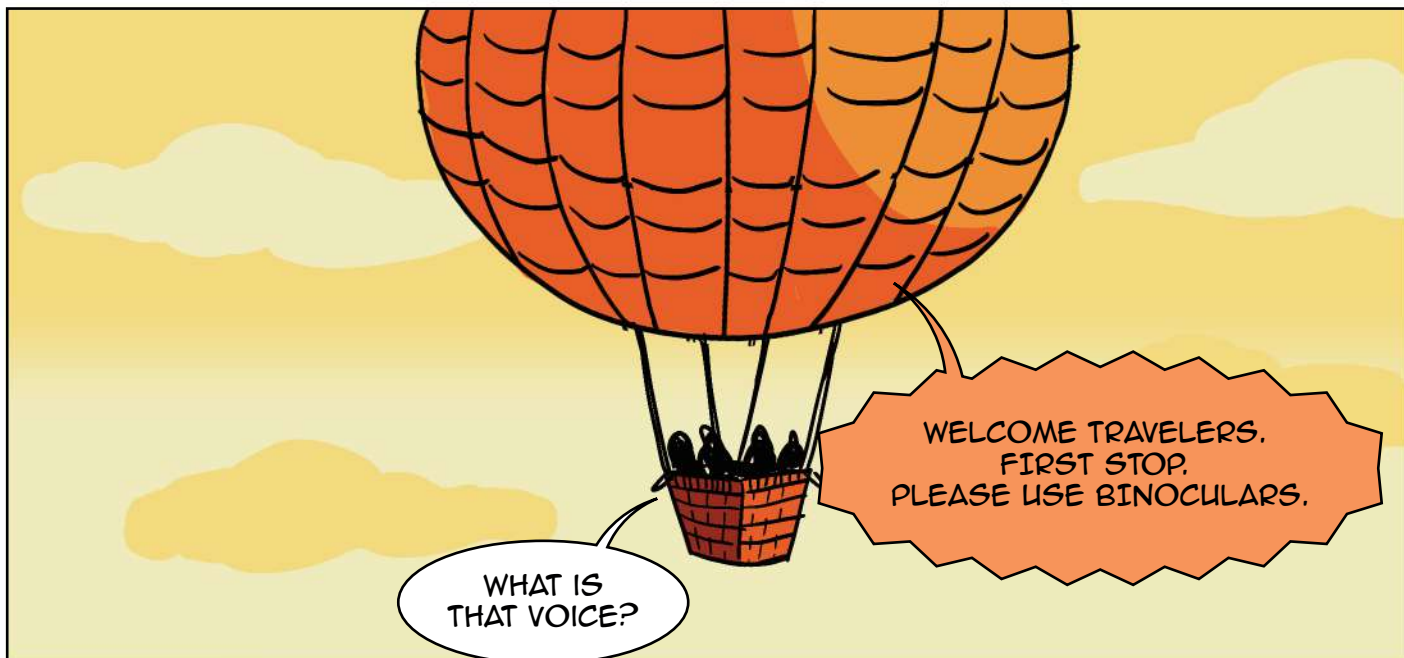








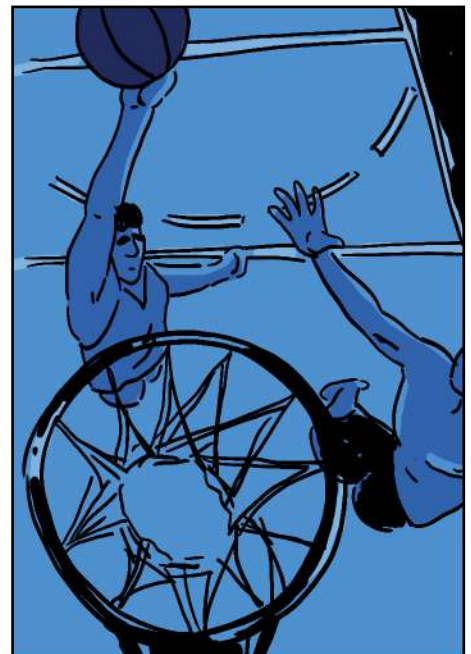




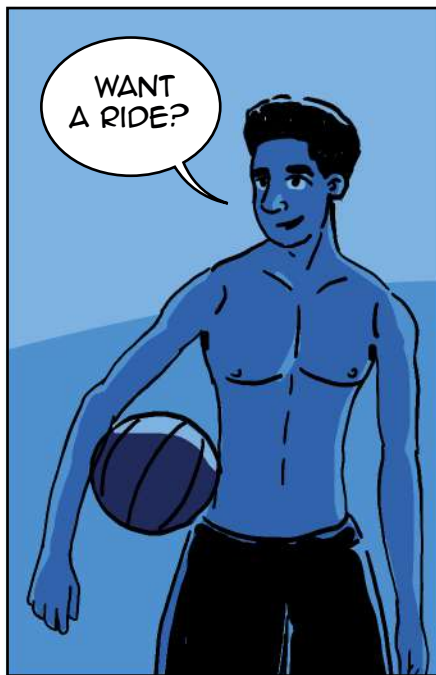


A FEW  
SECONDS LATER

WAIT...  
WHERE ARE WE?.



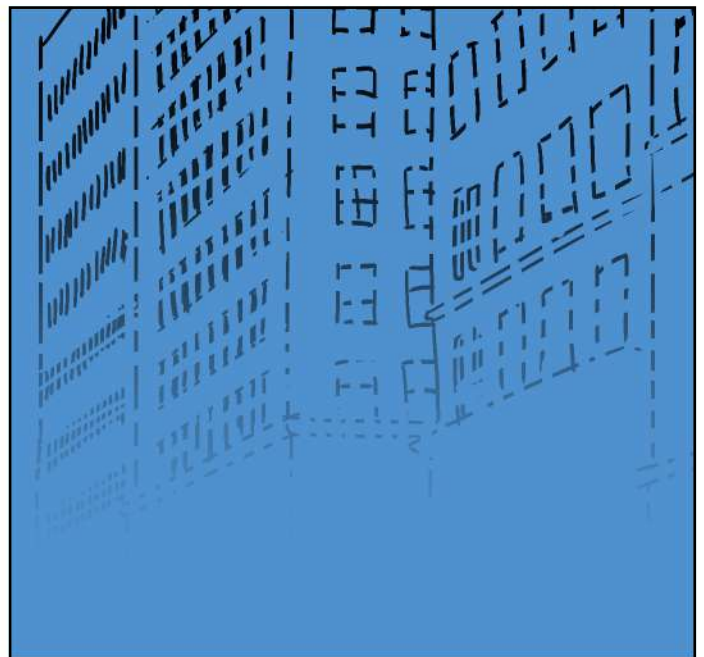






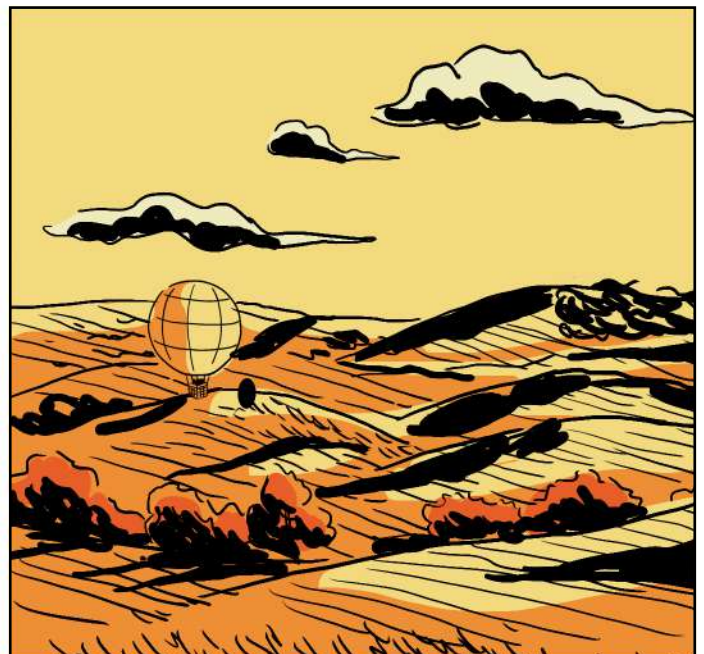
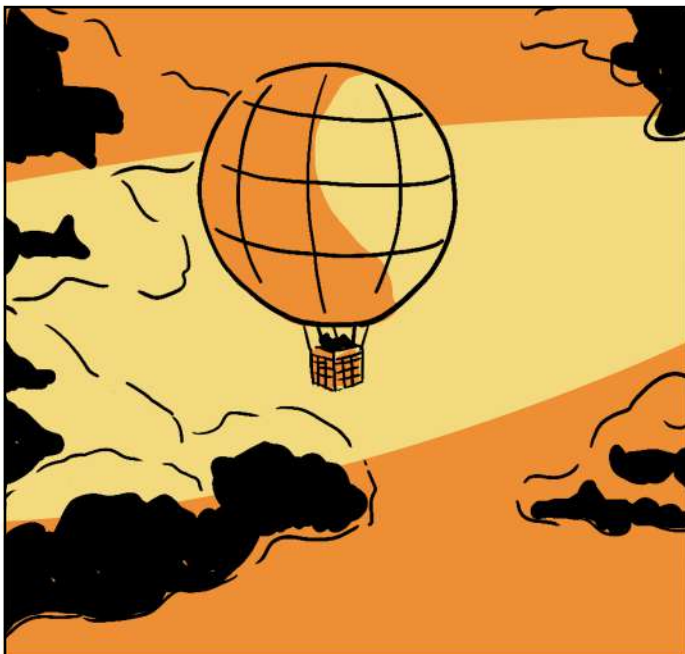






"KHEY": A VERY POPULAR TERM IN THE BANLIEUES TO REFER TO A FRIEND OR BUDDY.





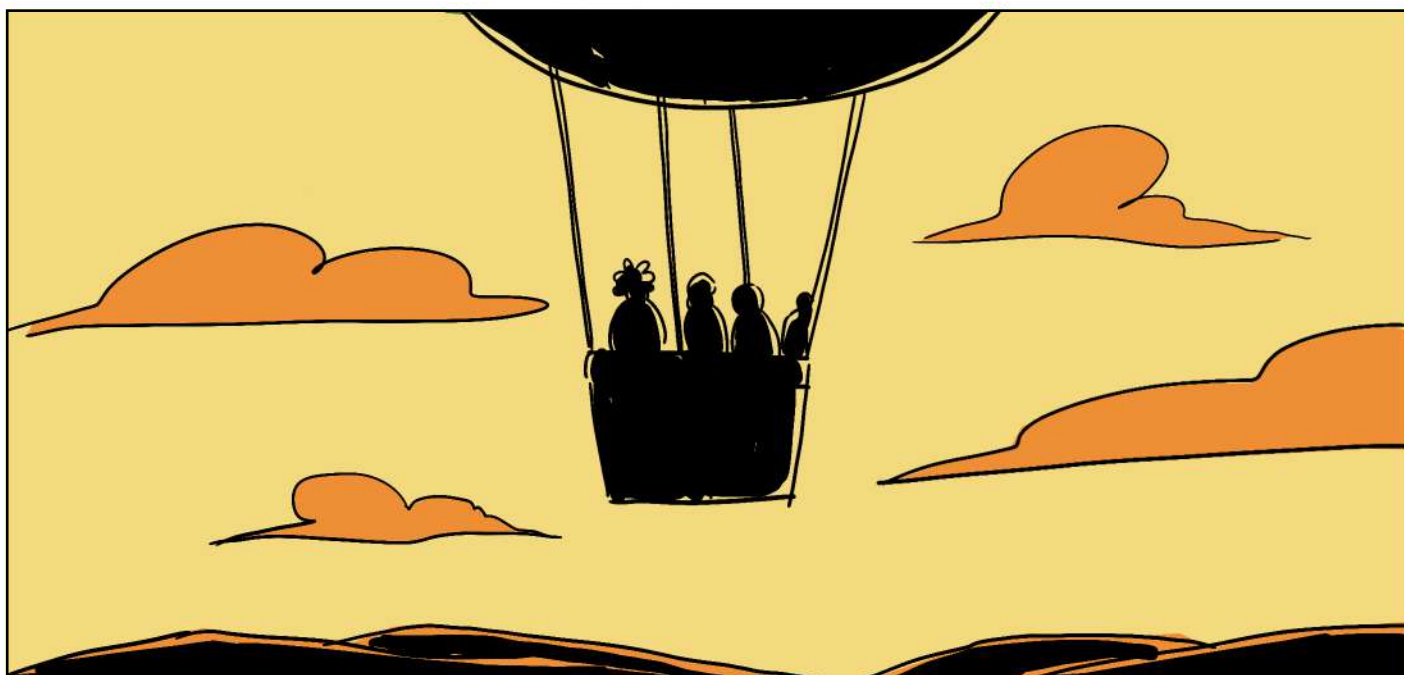






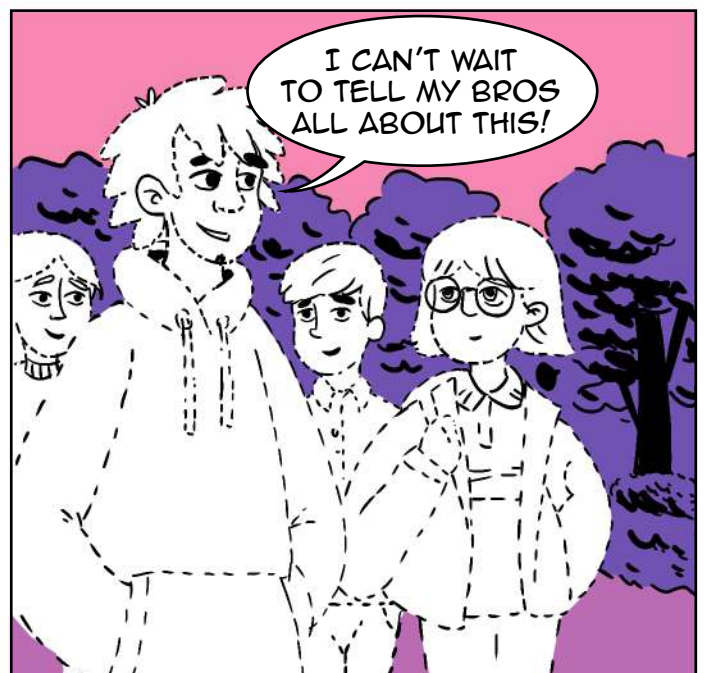
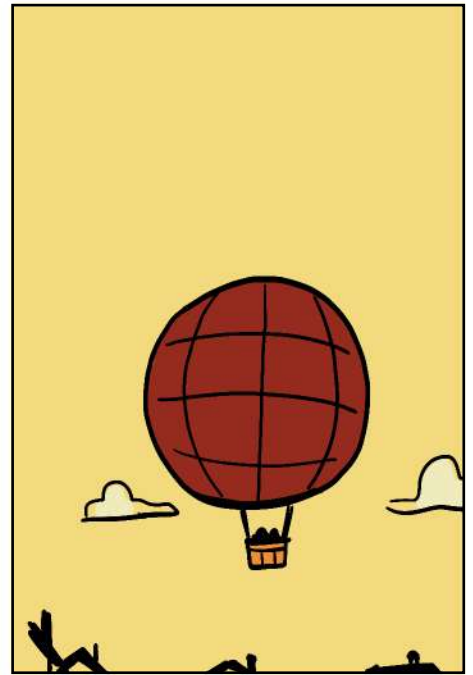
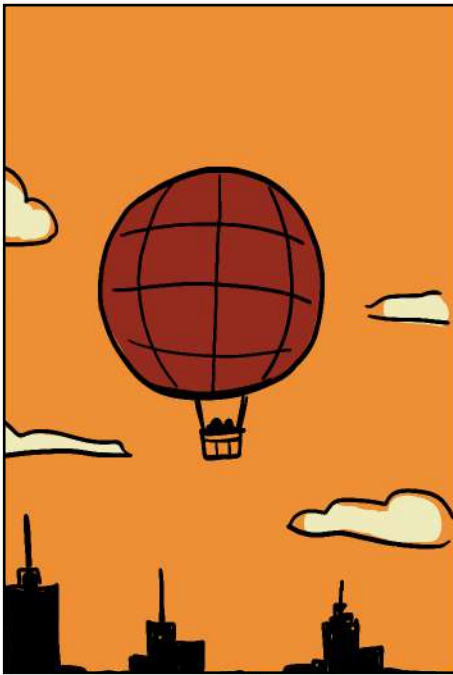


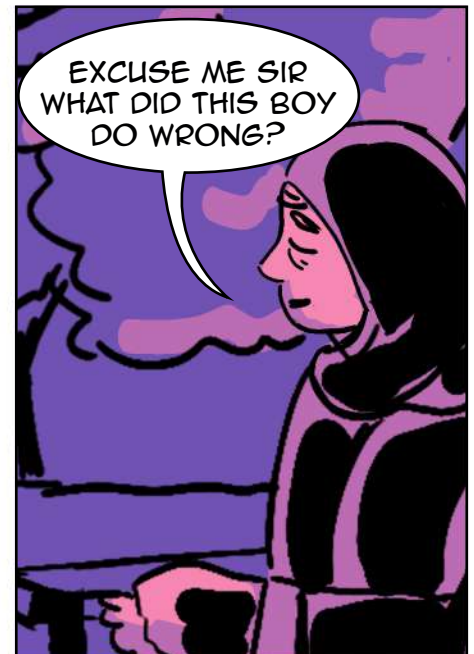




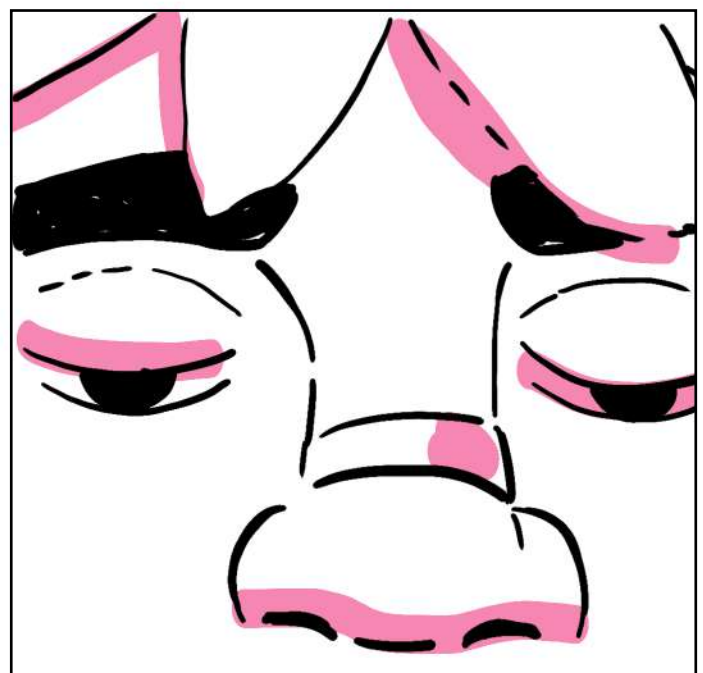
\*CHORIO: A GREEK TERM USED TO REFER TO A SMALL TOWN OR VILLAGE.





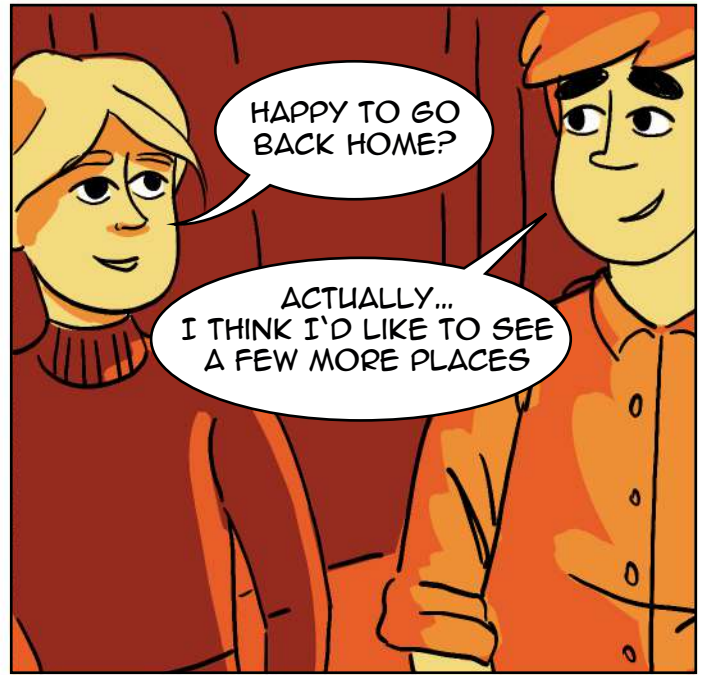












Discover more about  
the **ESSPIN** project here:





*SPECIAL THANKS TO VALENTINA  
FOR HER MORAL SUPPORT.*

An abstract background featuring a vibrant blue sky with large, textured, orange and yellow clouds. The clouds are rendered with thick, expressive brushstrokes, giving them a sense of depth and movement. The overall composition is dynamic and visually striking.

**"TRAVEL DOESN'T FIX THE WORLD  
BUT IT SURE MAKES YOU SEE  
WHERE IT'S CRACKED"**